

Proposal

Biogas plant 550 tonnes stillage/day



Date: 21/06/2024

Validity: 3months



CONTENTS

Overview	3
Raw material potential	4
Biogas plant technical performances	5
Working principle	6
Technological process of biogas production	7
Main equipment	8
Reactor	9
Reactor central agitator	10
Pump equipment	11
Decanter	12
Filtrate tank	13
Side mixer	14
Spiral Heat Exchanger	15
Window with spotlight	16
Reagent tanks	17
Gasholder	18
Biogas dryer and cooler	19
Biogas compressor	20
Desulphurization system	21
Flare	22
Gas analyzer	23
Dry cooler	24
Heat supply system	25
Water supplying and sewerage system	26
Automation and electrical equipment	27
Sensors set	28
Laboratory	29
Specification list	30
Appendixes	35
Appendix 1. Material flow diagram	
Appendix 2. Basic diagram	
Appendix 3. Plan of biogas plant	
Appendix 4. Electric power consumption	
Appendix 5. Prices for equipment and Zorg' services	



OVERVIEW

Zorg Biogas offers a solution to process stillage from ethanol distillery into biogas. The produced biogas is used to replace natural gas in the existing boiler. A proven technology of vertical CSTR reactor with a central agitator is used.

The vertical shape provides the optimal mass and heat transfer, as a result the biogas plant consumes very little electric energy. To compare different concepts of biogas plant it is necessary to pay attention not only to the price, but also to the quality and small but very important details. The temperature is maintained with an accuracy of $0,1^{\circ}\text{C}$. The roof of the reactor and next two rows of rings are made from stainless steel. There is a double filtration of biogas, which save burners life. The biogas plant is equipped with a modern laboratory. Biogas plants has a lot of features, which are known only to the experienced company. For example, operational temperature, foam safety valves, micro-elements and etc.

The offered biogas plant processes 550 tonnes stillage a day. The produced biogas will replace 20 400 m³/day natural gas or any other fuel with 213 MWh thermal energy a day or 730 MMBTU per day.

Raw material potential

Substrate	Quantity (tonnes/day)	Quantity (tonnes/year)	DM content: (%)	ODM content (%)	DM quantity (tonnes / day)	ODM quantity (tonnes / day)	Biogas yield (m ³ / tonneDDM)	Biogas (m ³ /day)	Methane con- tent (%)	Biogas (m ³ / year)
Stillage	550	200 750	10	92	55.0	50.6	670	33 902	60	12 374 230

Biogas plant technical performances

Characteristics	Values	Figures
Number of digesters	units	2
Digester volume		7 300
Work	m ³	7 609
Overall		
Organic load	kgODM/ m ³	3.43
Hydraulic retention time	days	28
Temperature in the digester	°C	52
Overall dimensions of the digester (diameter / height)	m	22.20/19.67
Number of gasholder	units	1
Gasholder volume	m ³	860
Overall dimensions of the gasholder (diameter / height)	m	12.5/9.3



WORKING PRINCIPLE

Biogas plant working principle

The technology is based on the biochemical conversion of organic materials from high molecular weight compounds to low molecular weight compounds. The first stage of this process is hydrolysis. Hydrolysis produces organic acids and alcohols. Organic compounds + H₂O → C₅H₇N₀₂+H-CO₃.

Further conversion of obtained dissolved compounds like organic acids and alcohols (C₅H₇N₀₂,HCO₃) into gases - CH₄, CO₂. C₅H₇N₀₂ + HCO₃ + H₂O → CH₄+CO₂+NH₄.

Biological process of consecutive (phasic) conversion of organic compounds take place in anaerobic environment i.e. in oxygen-free tank (biological reactor). At the first stage of fermentation, substrate hydrolysis take place under acidogenic bacteria influence. At the second stage, elementary organic compounds come through hydrolysis oxidation by means of hetero-acidogenic bacteria with production of acetate, carbon dioxide, and free hydrogen. The other part of the organic

compound including acetate forms C₁ compounds (elementary organic acids). Produced substances are the feedstock for methanogenic bacteria of the third type. This stage flows in two processes of A and B type the character which depends on caused by different bacteria type. These two types of bacteria convert the compound obtained during the first and second stages into methane CH₄, water H₂O and carbon dioxide CO₂. Methanogenic bacteria are more sensitive to the living environment compared to acidogenic bacteria. They require a complete anaerobic environment and a longer reproduction period. The speed and scale of anaerobic fermentation depends on bacteria metabolic activity. That is why the biogas plant chemical process includes hydrolysis stage, oxidation, and methanization stage. For that kind of substrate, these processes take place in the same reactor

Technological process of biogas production

Stillage is loaded directly into reactors. In the reactors, the substrate is fermented at temperature of + 52 C. Thus, a constant temperature is maintained in the digester throughout the entire fermentation process. The substrate is mixed with a central vertical agitator. The average fermentation time is 28 days. Biogas rises and collects under the conical arch of the digesters. To prevent excess pressure above acceptable, the digesters are equipped with a safety valves that starts to operate at a pressure of 10 mbar and releases biogas into the atmosphere.

The biogas from the digesters enter to an external gasholder. In the gasholder, pressure and biogas composition are averaged. Through pipelines, biogas from gasholder enters the biogas cooling system. The cooling system is a heat exchanger with its own cooling circuit. After cooling the biogas to + 20 ° C, condensate formed is removed from the cooling system. After cooling, the biogas is heated to + 35..40 ° C to reduce the relative humidity of the biogas.

After cooling biogas flows through the pipeline to the compressor, where its pres-

sure rises to 80-150 mbar for supplying to purification from hydrogen sulphide in activated carbon columns and then can be use to replace natural gas in existing boiler plant. All technological processes are controlled and operated by automatic system. Biogas plant work is visualized at central control room monitor. The control room is equipped with central control unit, which allows switch of any biogas plant module into automatic or manual mode with local or remote control.

MAIN EQUIPMENT





Reactor (R-01, R-02)

Reactor is an important part of a biogas plant made of enameled sheet metal. The steel digester is installed on a concrete basis. A layer of enamel protects the surface of the entire metal structure. The enamel is vitreous and very resistant to aggressive pH and mechanical damage. Enameled digester assembled from steel segments. Such a digester is quickly and safely mounted.

Steel panels are joined on bolted joints with a special sealant. The enamel coating is layered according to the PUESTA method. This is a special powder that is laid in layers by electrostatic attraction. Thus, uniformity of coating, density and smooth-

ness are achieved. Bolts made of stainless steel. All elements (flanges, etc.) are connected through an EPDM membrane to protect the enamel.

To reduce heat consumption and maintain a constant temperature, the digester is isolated. Outside the digester is coated with a decorative coating.

Specifications

Height : 22.20 m

Diameter : 19.67 m

The total volume : 7609 m³

Quantity: 2 pcs.

Plates (tank wall enamelled, roof)

Flange, nozzle, lap joint flanges outside

2 off control glass 2 x DN 250 with water flush

Ex light

Manhole

Ladder, stair and walkway

Brackets and clamps for pipe along tank edge (internal/external)



Reactor`s central agitator (AG-01, AG-02)

The agitator is fixed to the center of the rigid overlap of the fermenter. Mixer blades are designed in different directions. This design of the blades helps to create a lifting force that lifts the substrate from the bottom of the digester to the top of the tank. The upper blades rotate distributing the substrate along the digester, directing the flow downward. The agitator works constantly, mixing the substrate in the digester all the time.

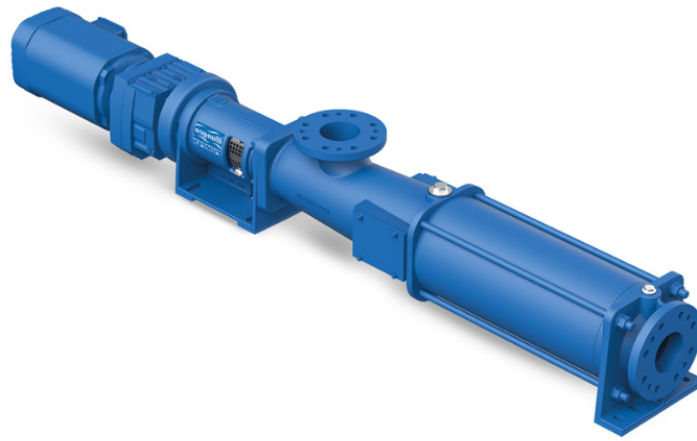
Specifications

Engine power:

N=32 kW

Quantity (per digester):

2 pcs



Pump equipment (PU-01...PU-07)

Pumps are used to transport substrate to the equipment and facilities in the biogas plant and away. Kinematic viscosity is a real physical factor that influences pump curves, and thus the choice of pump. Viscosity is essentially resistance to flow and this has implications for pumps. Fluid viscosity or thickness will affect how it will behave in a pump. Screw pumps are used for pumping flowable thin sludge, excess sludge and mechanically thickened sludge and conveying the substrates with their mostly high dry substance contents (DS) containing up to 13% dry matter. Optimum pumping results are guaranteed by the flow-optimized suction housing and a constant joint diameter which prevents the plaiting of long fibers.

Specifications

Digested Substrate pump (PU-01, PU-02)

Flow rate:	60 m ³ /hour
Engine power:	18.5 kW
Quantity:	2 pcs

Substrate circulation pump (PU-03, PU-04)

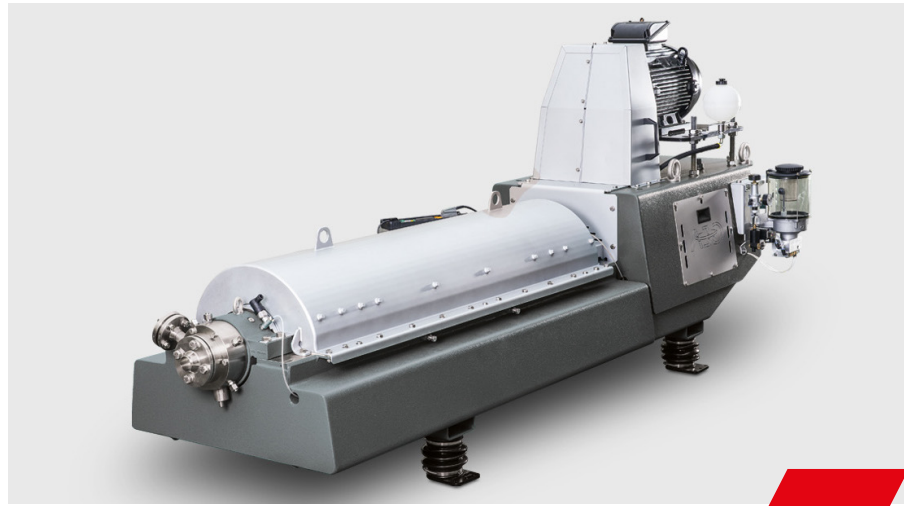
Flow rate:	45 m ³ /hour
Engine power:	15 kW
Quantity:	2 pcs

Filtrate pump (PU-05)

Flow rate:	60 m ³ /hour
Engine power:	18.5 kW
Quantity:	1 pcs

Substrate feed pump (PU-06, PU-07)

Flow rate:	60 m ³ /hour
Engine power:	18.5 kW
Quantity:	2 pcs



Decanter

This deep-pond 3-phase decanter centrifuge has been customized for clear clarification, liquid separation and solids dewatering. The solid-wall bowl has a cylindrical section for efficient clarification of the liquids and a conical section for drying the solids. Due to the centrifugal forces, the solids are flung onto the inner bowl shell and are transported by the scroll to the solids discharge. On decanter the heavy or light liquid phase is discharged under pressure by use of a centrifugal pump while the other liquid phase is discharged by drain tubes. The housing consists of a frame with supporting feet, protective plates and catchers for the discharged phases.

Specifications

Flow rate:	60 m ³ /hour
Engine power:	30.0 kW
Quantity:	2 pcs



Filtrate tank (FT-01)

Reservoir for reception of liquid kinds of raw materials. Tank is equipped with level sensors and side agitators for mixing raw materials.

Specifications

Diameter:	10.25 m
Height	4.27 m
Total volume:	352 m ³
Quantity:	1 psc

Plates (tank wall enamelled, roof)

Flange, nozzle, lap joint flanges outside

Control glass

Ex light

Manhole

Ladder, stair and walkway

Brackets and clamps for pipe along tank edge (internal/external)



Side Spiral agitator (AG-03)

Side mixers are used in biogas reactors and receiving tanks for mixing medium and low viscosity substrates. When installed on a metal tank, the stirrer is attached to a support column. The agitator drive is located outside, and a shaft with a screw goes into the reactor through a flange installed in the wall. Installation through a flange prevents the transfer of forces from the agitator to the tank walls.

The side agitator of this series has an installed motor with a power of 15 to 22 kW, which allows it to mix a substrate with a volume of up to 31,800 m³/h. Suitable for use in aggressive environments with a dry matter content of up to 11 %. The special design of the shovel-like blades works good both with mixing different types of substrates and breaking up floating layers and crust.

Specifications

Nominal power:

N= 11kW

Quantity:

1 psc



Spiral Heat Exchanger (HE-01, HE-02)

Using as modular design for slurry, sludge and biological mass and for mediums that are badly contaminated and burden by solids with a distinctive fouling behavior. The main component of the Spiral Heat Exchanger is an aluminum cast member made of a non-corrosive alloy. A number of left-handed and right-handed components, one on top of the other, form a compact, high-capacity heat exchanger. To avoid hard alteration of the direction of the flow, the spiral channel has an anti-clockwise curvature (left-hand element) and a clockwise curvature (right-hand element).

Specifications

Volumetric capacity	5 to 60 m ³ / h
Temperature	up to 90 ° C;
Working pressure	at 4 bar
Capacity of the heat exchanger	150-300 kW
Quantity	2 pcs



Window with spotlight (SG-01, SG-02)

Inspection windows are designed for visual control of processes inside the fermenter and post-digester. Spotlights were made in explosion-proof with automatic disconnection. Inspection windows are equipped with a cleaning washing system.

Specifications

Inspection windows Ø300
Spotlight VISULUX UL50 -G -H
230V, 50W, IP65
Quantity: 3 pcs



Reagent tanks

Reservoir for reception of liquid kinds of reagents. The tank is a system ready to instal with automation and control cabinet to manage proceses from filling, mixing to discharging by pump. The tank is manufactured with quality plastics, such as PE, PP, PVDF, and PVC. Possible to use in the different of climate zones and for contact with the most aggressive media. Temperature resistant and use from -40°C to over $+100^{\circ}\text{C}$. Pressure and impact resistant welding and adhesive joints - created according to DVS guidelines - are just as resistant as the sheet material itself.

Electrically insulated or conductive – use of conductive materials for select-ed applications to avoid static electricity possible.

Specifications

Iron chloride tank

Diameter:	1,6 m
Height	4,5 m
Total volume:	9,0 m ³
Quantity:	1 pcs.

Anti-foam reagent tank

Diameter:	3,4 m
Height	4,9 m
Total volume:	40 m ³
Quantity:	1 pcs.



Gasholder (GH-01)

The gasholder provides for biogas storage and for equalizing pressure and biogas composition. The gasholder system has a two-layer construction. The external material consists of a weather-proof film of PVC-coated polyester fabrics with UV protection. Both sides are finished with an external N/5cm, internal membrane PELD (gasholder) membrane.

The gasholder has a methane permeation maximum of $260 \text{ cm}^3/\text{m}^2 \cdot 1 \text{ bar}$ biogas resistance. The gasholder film temperature range allows operation from -30°C to $+60^\circ\text{C}$.

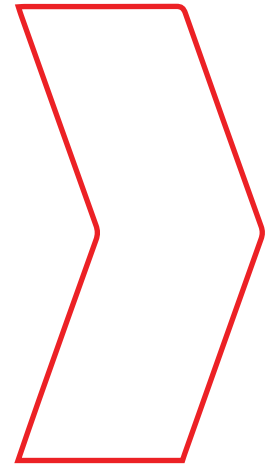
The internal film is stretched under normal biogas pressure. Air is blown into the space between the external and internal membranes to pressurize the internal membrane and form the shape of the external membrane.

The biogas pressure in the gasholder is 2-5 mbar. The membranes are designed and cut out on NC machines. Welding is executed by high frequency currents. These steps yield substantial improvements for quality and service life compared to hand-made membranes welded by standard welding equipment.

To prevent damage to the gasholder as a result of overpressure conditions, a safety valve is installed. To survey the internal membrane, an inspection window is installed on the external membrane.

Specifications

Height :	9.3 m
Diameter :	12.5 m
The total volume :	860 m ³
Quantity:	1pcs



Biogas dryer and cooling (CHL-01)

Biogas dryer and cooling are provided with special equipment as GAS COOLER and AIR-COOLED LIQUID CHILLER. Biogas plants thanks to an extensive range of dedicated Biogas solutions, low pressure heat exchangers, a comprehensive range of water chillers and RWD Dry Coolers. Designed as one-way shell-and-tube heat exchanger. Process gas inside of the tubes; cooling water in the shell.

All parts in contact with the process gas made of stainless steel 316Ti or 316L; heat exchanger shell made of stainless steel/ Designed with gas outlet chamber outlet connection radial; inspection opening axial. Official acceptance according to PED 2014/68/EU in accordance with ADMerkblätter and factory pressure test.

Specifications (CHL-01...CHL-03)

Gas volume flow	1420 m ³ / h
Gas inlet temperature	+55 C
Gas outlet temperature	+10C
Engine power	38 kW
Quantity:	1 pcs



Biogas compressor (BC-01, BC-02)

Biogas blower is a device used to move gas and increase pressure thanks to a rotating impeller within a toroidal channel, so there is a progressive increase of energy. Blower is used to transporting biogas from gasholder storage to consumer (cogeneration power plant in our case)

Specifications

Flow rate	1500 m ³ /h
Pressure	150 mbar
Engine	18 kW
Quantity	2 pcs

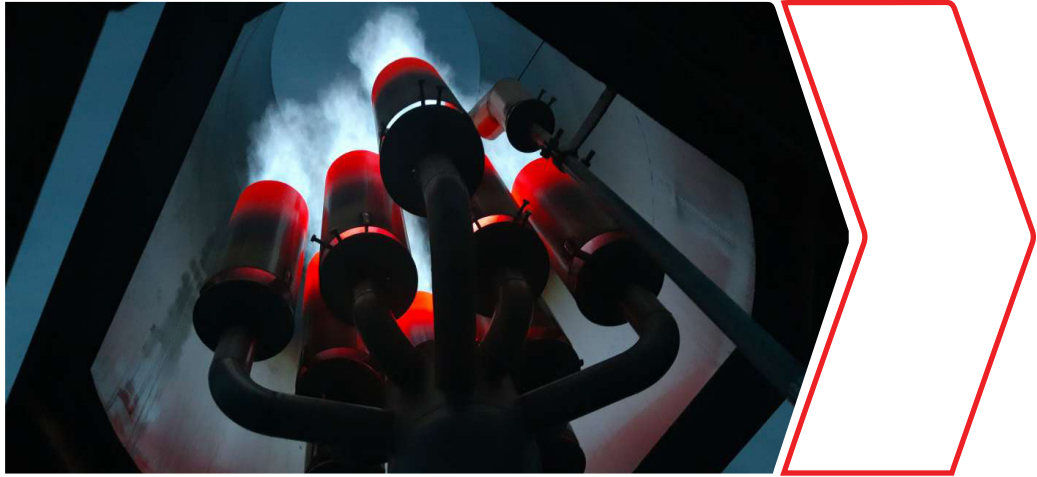


Desulphurization system

The desulphurization system is a 2-step system. Stage 1 is adding Iron Chloride. After 1-st step the sulphur concentration is 80 ppm. Stage 2 - activated charcoal filtration, as activated charcoal has the capability to absorb sulfur. After passing through activated charcoal filters, the sulfur concentration is reduced to 0 ppm

Specifications

The volume of charcoal	500 kg
Numbers of charcoal columns	2 pcs



Flare (BF-01)

The flare is designed for the temporary or periodical complete combustion of the biogas produced by biogas plants without the possibility of its use as an energy source. The burn system consists of a burner and additional equipment. The burner is designed on the principle of injection and consists of a combustion nozzle with an injector with an air supply control system, flame protection tube, fitting and burner control system. The biogas combustion system is made of stainless steel.

The supporting structure holds the burner and vertically mounted socket. The burn control system is installed in a case, which is mounted on the supporting structure of the combustion system and contains all the elements for monitoring and controlling ignition and flame.

Specifications

Flow rate 1420 m³/h

Quantity 1 pcs



Gas analyzer (CH₄, CO₂, H₂S, O₂) (GA-01)

Gas analyzer - a measuring device to determine the qualitative and quantitative composition of the gas mixture. In a biogas plant's installed absorption gas analyzers, biogas mixture components are absorbed sequentially with various reagents. Automatic gas analyzers continuously measure any physical or physicochemical characteristics of the gas mixture or its individual components. Operation is based on physical methods of analysis, including auxiliary chemical reactions.

Specifications

Set includes

- Device for wall mounting
- LCD display menu
- Flow meter / control valve
- Sensors

Defined gases methane % (CH₄), carbon dioxide % (CO₂), hydrogen sulfide ppm (H₂S)



Dry cooler (DC-01, DC-02)

The device is designed to cool the heat-carrier in heat supply system. When using highly temperature substrates, there is a chance of uncontrolled self-heating of the digester. The cooler is connected to the heating pipes, and when it is active according to temperature sensors, the same lines of heating supply are used. One cooler works with related spiral heat exchanger to cool the input substrates. Another one works with second heat exchanger to control temperature inside the digester.

Specifications

Power (cooling)	100 kW
Engine power:	6.0 kW
Quantity:	2 pcs



Heating system

The heating equipment is used for biogas plant heating and for sustaining a constant temperature in the fermenter. The heating equipment includes circulation pumps, heat exchangers, heating manifolds, and tubes. The heat from the boiler is transferred to biogas plant walls by using a heat exchanger and is pumped through the interior of the biogas plant by circulation pumps. The system prepares water with added ethyl glycol. The inlet and outlet temperature in the fermenter are 60C and 40C respectively.

Specifications

Circulating pump feeding heat carrier
Flow 12 m³ / h;
Pressure 1.1 bar
Engine 3.5 kW

Circulating pump feeding heat carrier
Flow 0.6 m³ / h;
Pressure 1 bar,
Engine 0.165 kW

The pumping station feeding propylene glycol
Flow 1,0m³ / h;
Pressure 4 bar,
Engine 0.775 kW



Water supplying and sewerage system

The water supply system provides biogas plant with water for technological needs, water for heating-cooling system, water for drinking and domestic use, and water for fire safety systems. As used, centrifugal single-stage pumps are the main pumping elements. These pumps are designed for pumping wastewater, water for drinking and domestic use, and sewage.

Pressure Boosting Systems are designed for pure water pressure boosting in industrial plants. The booster is comprised of 2 to 3 pumps connected in parallel and installed on a common base frame and provided with all required fittings.

Specifications

Water supply pump

Pressure	2.5 bar
Flow	25 m ³ /h
Engine	3.0 kW

Submersible pump

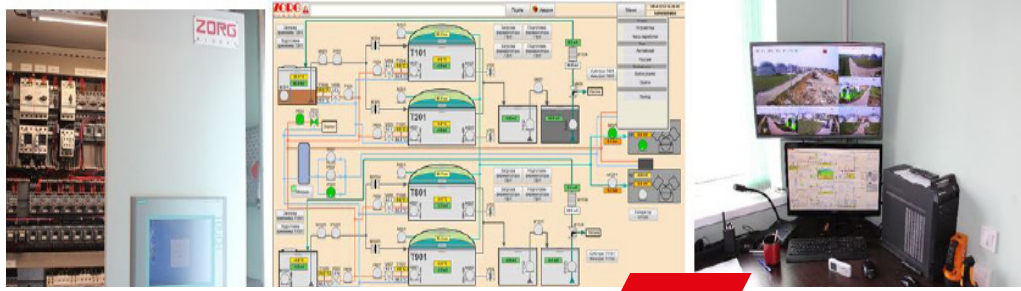
Pressure	1.1 bar
Flow	15 m ³ / h
Engine	3,5 kW

Submersible pump with power cable

Pressure	1.1 bar
Flow	1,7l / s
Engine	0,9 kW

Equipment

- Pump case control
- Stove-base
- gauges
- Check valves
- Float switches
- Brackets
- Valves



Automation and electrical equipment

Process control equipment is used for supervision and regulation operation of the plant and for the limitation of damage. In case of emergency (for example, breakdown of the electrical power supply) the biogas plant is automatically transferred to safe operating conditions by the process instrumentation. Critical electrically driven devices are supplied with emergency power. An automatic system allows the supervision of the plant in real time and to recognize and correct aberrations immediately; to run the plant at its optimum saving resources and costs; and to record for the electronic database operation parameters. The automatic system consists of a control cabinet and sensors for parameter control of technological processes and execution devices.

The control cabinet is designed based on the industrial controller Siemens CPU315-DP2, using periphery distributing system Simatic ET200S, and operator panel OP277 Touch with touch-sensitive controls. Communications is executed by PROFIBUS and MPI with physical interface RS-485. The control program is designed based on the Simatic Step7. The control cabinet is a modular design. The upper part has a power box with central and front-end processor. The periphery distributing system, Simatic ET200S, is installed with input - output units. The lower part with interface relay and clips is installed for connecting execution devices. The entire plant is controlled by a single operator.

Specifications

Incoming control case with automatic set ASE-1, 2, 3
Base Siemens CPU315-DP2 controller
Peripherals Simatic ET200S
Control panel OP277 touchscreen
Communication PROFIBUS and MPI
Interface RS-485
Control system Simatic Step7



Sensors

Sensors are used to measure physical quantities (temperature, pressure, level of moisture) data collection.

Specifications

Conductometric sensor
Pressure Sensor / level
Ultrasonic sensor
Gas Pressure Sensor
Temperature converters with protective sleeves
The moisture sensor and the gas temperature



Laboratory

Monitoring and control of parameters of raw materials and fermentation processes is important for the efficient operation of a biogas plant. The laboratory allows you to assess the content of dry matter in the input raw materials, fermented mass, determine the ratio of volatile organic acids to total inorganic carbon (FOS/TAC parameter), determine the degree of substrate fermentation in fermenters, the level of biogas output, and evaluate the efficiency of separator.

Equipment

Analytical scales
Moisture analyzer
Automatic titrator
Laboratory pH meter
Centrifuge
A set of flasks

SPECIFICATION LIST



Nº	Equipment	Characteristic	Quantity
1	Filtrate tank (steel enamel tank)	V=352m³	1
1.1	Manholes	set	1
1.2	Flanges to connection engineering communication	set	1
1.3	Service sites (for mixers gear, valves and connections)	set	1
1.4	Fixing for engineering communication	set	1
2	Side Spiral agitator	N=11 kW	1
2.1	Three phase motor, pressure-proof		1
2.2	Belt drive unit		1
2.3	Double acting mechanical seal		1
2.4	PTC motor control		1
2.5	Base-frame for the assembly		1
3	Reactor (steel enamel tank)	V=7609 m³	2
3.1	Windows with spotlight, complete, disassembled	set	2
3.2	Flanges to connection engineering communication	set	2
3.3	Service sites (for mixers gear, valves and connections)	set	2
3.4	Fixing for engineering communication	set	2
4	Reactor` s vertical agitator	N=32kW	2
4.1	Airtight motor gearbox		2
4.2	Hydraulic screw (wear-resistant steel)		2
4.3	Shaft (adapted to the height of the fermenter)		2
4.5	Frequency converter		2
5	Circulation substrate pump	Q=50 m³/h	2
6	External heat exchanger	200 kW	2

Nº	Equipment	Characteristic	Q-ty
7	Digested substrate pump	Q=60m³/h	2
8	Filtrate pump	Q=60 m³/h N=18.5 kW	1
9	PVC external gas holder	Ø12,5m	1
9.1	Weather protection film	Ø12.5 m	1
9.2	Gasholder film PELD methane permeation max.260 cm ³ /m ² *d*1 bar, 650 N/5cm biogas resistant		1
9.3	Air blower	16A, 0,5kW	1
9.5	Excess and minimum pressure valve		1
9.6	Dome level sensor		1
9.7	Mounting system		1
9.8	Accessories	set	1
10	Digester safety valve		2
11	Biogas compressor	Q=1500 m³/h N=18 kW	2
12	Biogas Cooling System	1420 m³/h	1
12.1	Chiller		1
12.2	Heat exchanger		1
12.3	Polypropylene glycol tank		1
13	Desulphurisation system		set
13.1	Filter with activated charcoal	500 kg	2
14	Biogas analyzer (CH₄ , CO₂ , H₂S)		set
15	Electromagnetic flow meter		1

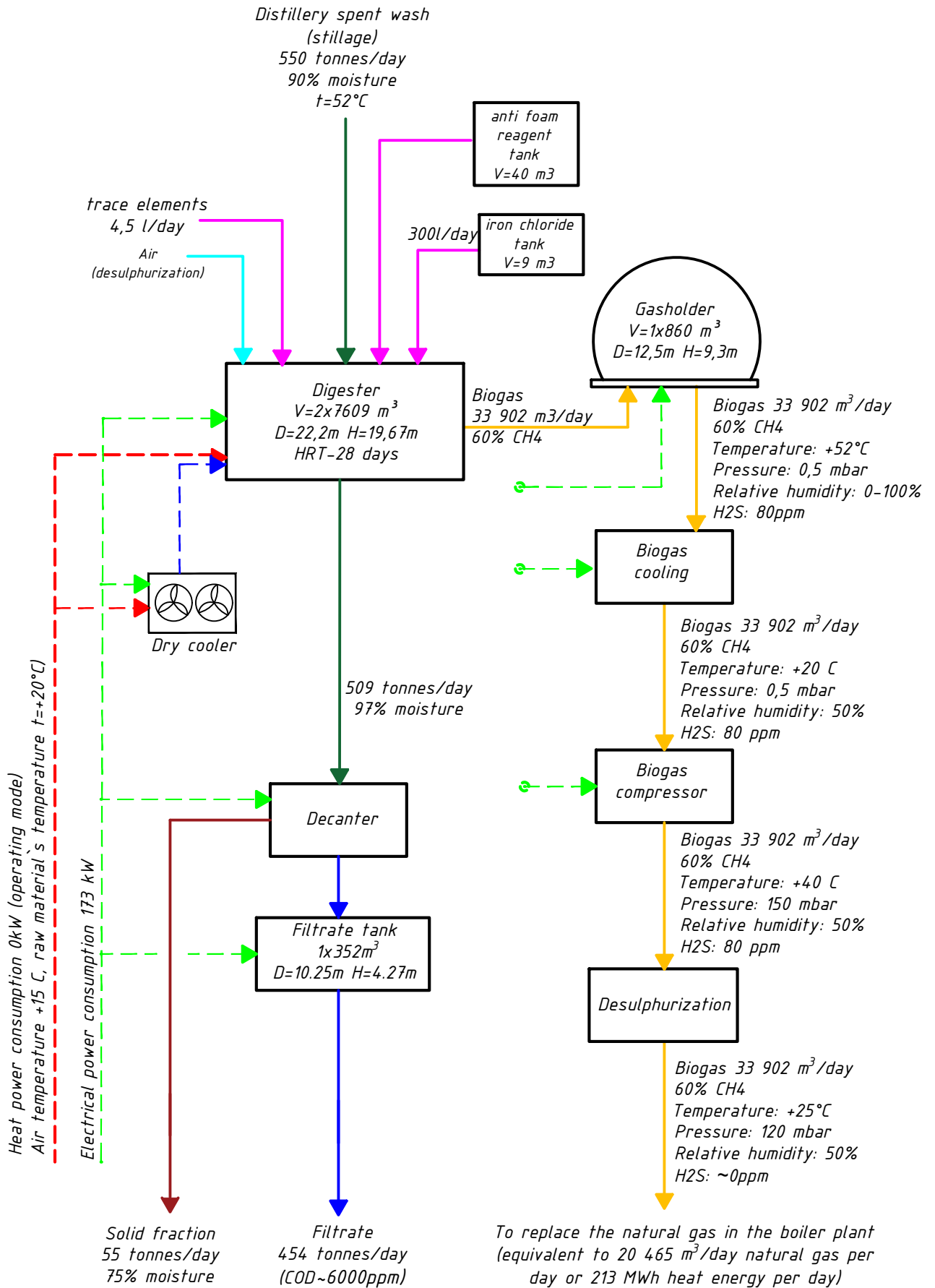
Nº	Equipment	Characteristic	Q-ty
16	Flare	1420 m³/h	1
16.1	Compressor		1
16.2	Manual locking element		1
16.3	Deflagration fuse		1
16.4	On-site control cabinet		1
16.5	Auto ignition system		1
16.6	Auto Main Gas Solenoid Valve		1
17	The heat supply system		1
17.1	Diaphragm expansion tank	V=1000 l P=6Bar T=120°C	1
17.2	Circulating pump for supplying heat carrier	Q=12 m³/h N=3,5 kW	2
17.3	Circulation pump for supplying heating water to the office building	N=0,165 kW	1
18	Dry cooler	100kw heat pow.	2
19	Automation with electrical equipment complete, disassembled		1
19.1	Incoming distribution cabinet with a set of automation DB-1		1
19.2	Incoming distribution cabinet with a set of automation DB-2		1
19.3	Incoming distribution cabinet with a set of automation DB-3		1
20	Sensor set		1
21.1	Conductivity sensor	31SCM50	3
21.2	Pressure / level sensor	SEN-3251 B025 G1 1Bar	6
21.3	Ultrasonic sensor	SPA-380-08	3
21.4	Gas pressure sensor	G1/2 0,4Bar	3

Nº	Equipment	Characteristic	Q-ty
21.5	Thermal converter		3
21.6	Thermowells for thermocouples	TR10-B	3
21.7	Thermal converter heating circuit	TR3	3
21.8	Substrate pressure sensor	G1 4Bar	5
21.9	Substrate pressure sensor	G1 2,5Bar	5
21.10	Coolant pressure sensor	G1/2 6Bar	2
21.11	Immersion level sensor	LS-10 0,6Bar 4-20 mA	4
21.12	Humidity and gas temperature sensor	ESFTF-I	3

APPENDIXES



Material flow diagram



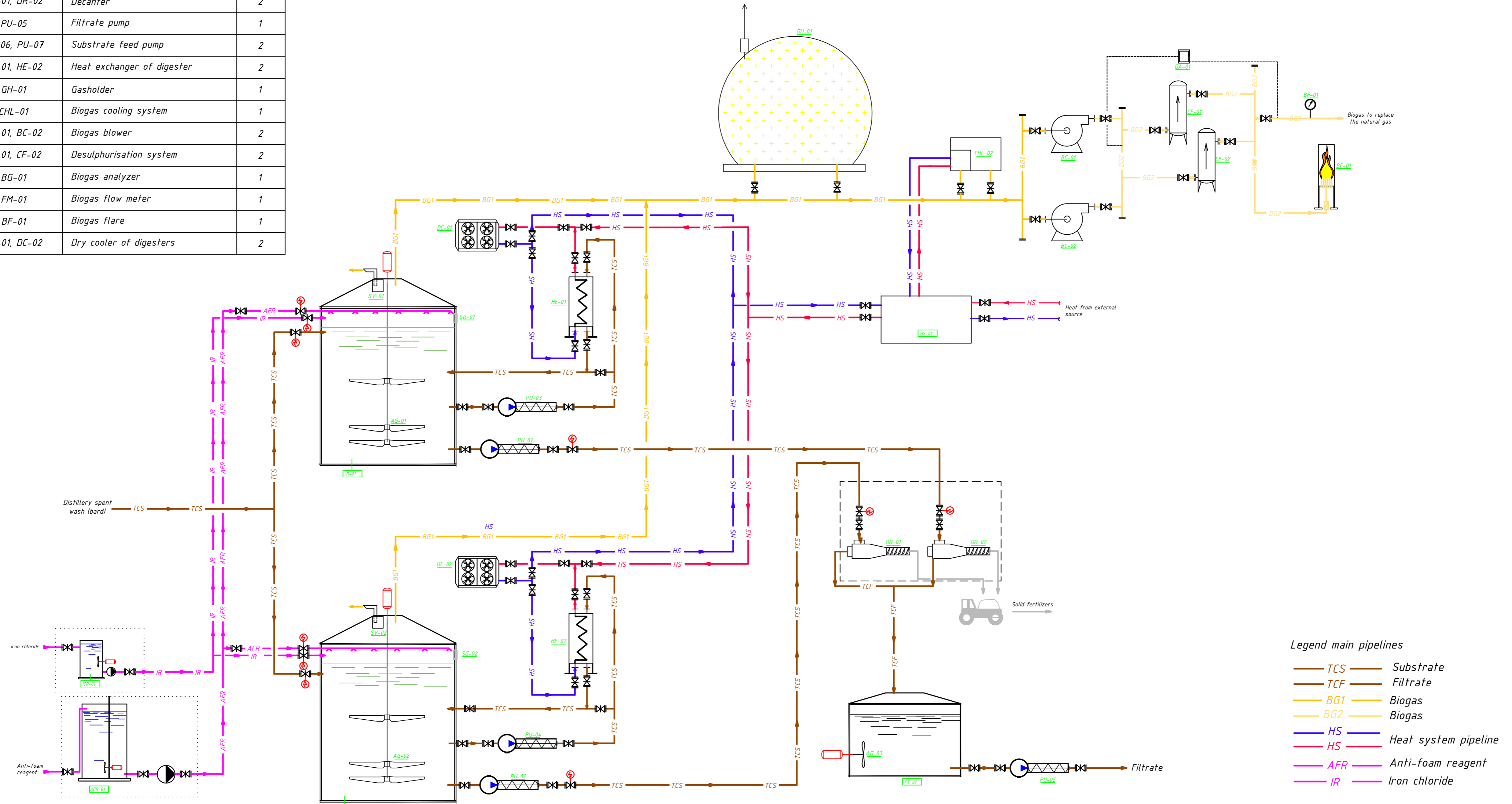
Explication

N/№	Name	Quantity
AG-01, AG-02	Reactor's central agitator	2
AG-03	Side agitator in the filtrate tank	1
SV-01, SV-02	Safety valve	2
SG-01, SG-02	Inspection windows	2
PU-01, PU-02	Digested substrate pump	2
PU-03, PU-04	Substrate circulation pump	2
DR-01, DR-02	Decanter	2
PU-05	Filtrate pump	1
PU-06, PU-07	Substrate feed pump	2
HE-01, HE-02	Heat exchanger of digester	2
GH-01	Gasholder	1
CHL-01	Biogas cooling system	1
BC-01, BC-02	Biogas blower	2
CF-01, CF-02	Desulphurisation system	2
BG-01	Biogas analyzer	1
FM-01	Biogas flow meter	1
BF-01	Biogas flare	1
DC-01, DC-02	Dry cooler of digesters	2

Structure

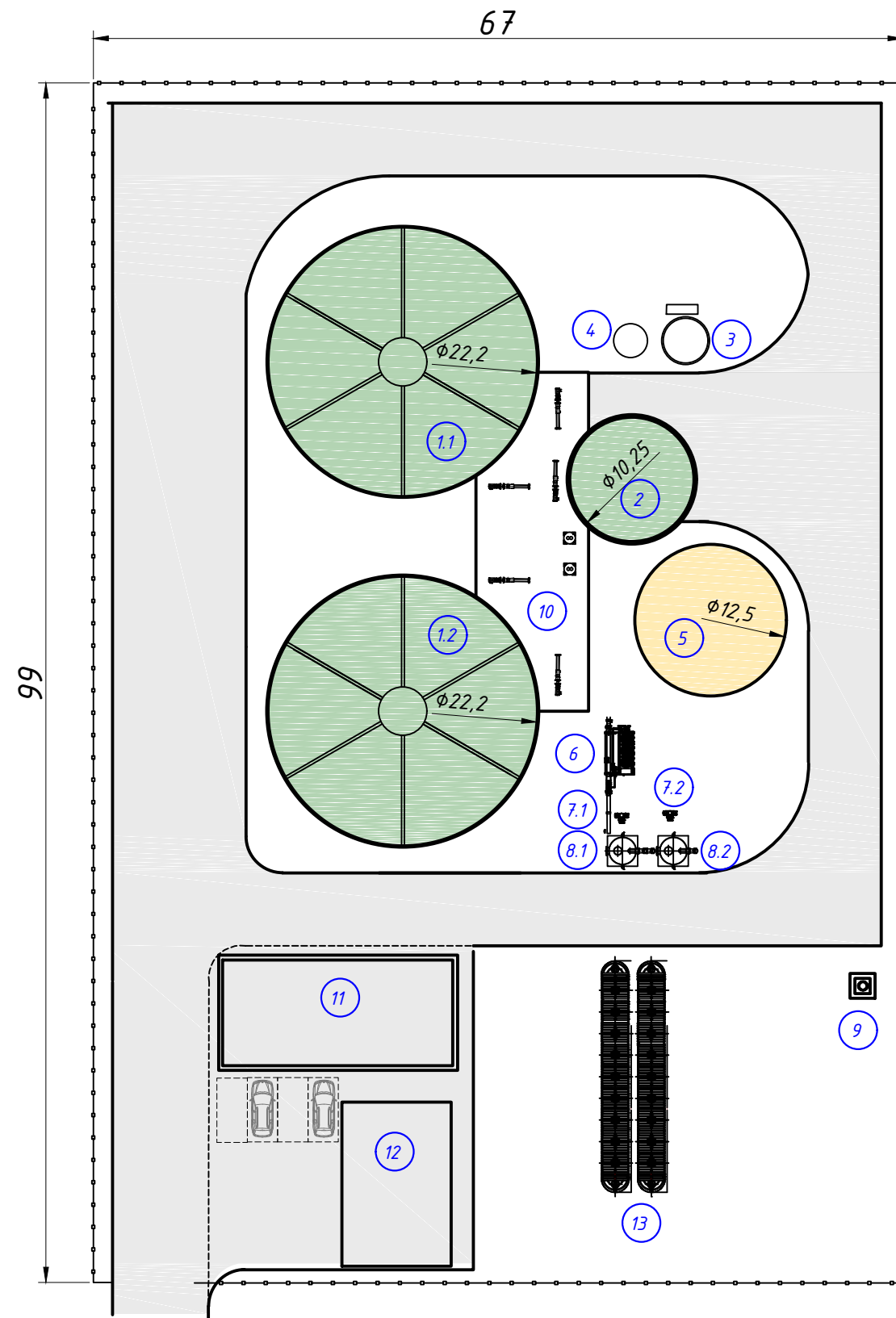
N/№	Name	Quantity
R-01, R-02	Reactor	2
FT-01	Filtrate tank	1
HS-01	Heat sub-station	1
AFR-01	Anti-foam reagent tank	1
ICR-01	Iron chloride tank	1

Basic diagram



- Legend main pipelines
- TCS Substrate
 - TCF Filtrate
 - BG1 Biogas
 - BG2 Biogas
 - HS Heat system pipeline
 - HS Heat system pipeline
 - AFR Anti-foam reagent
 - IR Iron chloride

Preliminary layout proposal



Explication

N/Nº	Name	Note
1.1, 1.2	Reactor	R-01, R-02
2	Filtrat tank	FT-01
3	Anti-foam reagent tank	AFR-01
4	Iron chloride tank	ICR-01
5	Gasholder	GH-01
6	Biogas cooling system	CHL-01
7.1, 7.2	Biogas compressor	BC-01, BC-02
8.1, 8.2	Carbon filter (desulphurization)	CF-01, CF-02
9	Biogas burner	BF-01
10	Equipment room	ER-01
11	Technical room	TR-01
12	Warehouse	WH-01
13	Fire water tank	FWT

Appendix 4

Name equipment	Instal. Pow. (kW)	Quantity (pcs)	Total installed power (kW)	Working hours per day	Consumption kWh per day
Digester Vertical agitator	32,0	2	64,0	16,0	1024,0
Submersible mixer in filtrate tank	11,0	1	11,0	8,0	88,0
Substrate feed pump to digester	18,5	2	37,0	6,0	222,0
Substrate pump to decanter	18,5	2	37,0	6,0	222,0
Substrate circulation pump	15,0	2	30,0	9,0	270,0
Filtrate pump	18,5	1	18,5	8,0	148,0
Decanter	30,0	2	60,0	9,0	540,0
Anti-foam pump	2,5	1	2,5	1,0	2,5
Iron-ichloride pump	2,0	1	2,0	1,5	3,0
Mixer in anti-foam reagent tank	1,5	1	1,5	3,0	4,5
Mixer in iron chlorided tank	0,3	1	0,3	1,0	0,3
Biogas cooling system	38,0	1	38,0	24,0	912,0
Biogas compressor	18,0	2	36,0	12,0	432,0
Dry cooler (Digester cooling system)	6,0	2	12,0	at t>55°C	
Circulating pump feeding heat carrier	3,5	1	3,5	24,0	84,0
Air blower for double membrane	1,0	1	1,0	24,0	24,0
Circulation pump for supplying at carrier to the digester	0,8	2	1,5	24,0	36,0
Circulating pump feeding hot water at technical building	0,1	1	0,1	only ambient temp +15°C	
Circulation pump for supplying network water to the digester cooling system	2,0	1	2,0	24,0	48,0
Propylene glycol pump station	0,8	1	0,8	0,5	0,4
Desulphurization system compressor	1,5	2	3,0	24,0	72,0
Drinage pump	1,0	2	2,0	0,5	1,0
Lighting of the biogas plant territory	1,0	1	1,0	8,0	8,0
Spot light for digesters inspection windows	0,1	1	0,1	0,5	0,0
Working lighting of switchboard	0,1	1	0,1	0,5	0,1
Total installed power, kW			365		
Total consumed electric energy, kWh per day					4142
Total consumed power, kW					173

Pos	Name	Number of units	Unit price, EUR	Discounts*	Discounted unit price, EUR	Discounted price sub-total, EUR
A	Project documentation	1	90.000	0%	90.000	90.000
B	Supervision	1	50.000	0%	50.000	50.000
C	Startup and training	1	50.000	0%	50.000	50.000
D	Living and travel expences	1	40.000	0%	40.000	40.000
E	Delivery of the equipment	30	2.500	0%	2.500	75.000
F	Laboratory	1	25.000	0%	25.000	25.000
G	Construction	1	1.500.000	0%	1.500.000	1.500.000
I	Filtrate Storage (V=4000 m3)	1	40.000	0%	40.000	40.000
1	Digester Enameled steel tank V=7609 m³ (including servise stairs, platforms, manholes, pipe flanges, suppotrs, fixing etc.)	2	830.000	0%	830.000	1.660.000
2	Filtrate Enameled steel tank V=352 m³ (including servise stairs, platforms, manholes, pipe flanges, suppotrs, fixing etc.)	1	126.000	0%	126.000	126.000
3	Digester central agitator 32kW	2	156.000	0%	156.000	312.000
4	Side agitator 11 kW	1	42.300	0%	42.300	42.300
5	Digested substrate pump 18,5kW	2	26.000	0%	26.000	52.000
6	Circulation pump 15kW	2	23.100	0%	23.100	46.200
7	Filtrate supply pump 18,5kW	1	26.000	0%	26.000	26.000
8	External heat exchanger	2	93.500	0%	93.500	187.000
9	Decanter 30kW	2	146.000	0%	146.000	292.000
10	Gasholder 860 m3	1	102.000	0%	102.000	102.000
11	Biogas chiller (Biogas cooling system) 1420 m3/h	1	132.000	0%	132.000	132.000
12	Biogas blower 1500 m3/h	2	27.000	0%	27.000	54.000
13	Desulphurization column with active coal 500 kg	2	38.500	0%	38.500	77.000
14	Biogas burner 1420 m3/rod	1	84.000	0%	84.000	84.000
15	Gas conditioning unit	1	28.500	0%	28.500	28.500
16	Gas analyzer	1	28.300	0%	28.300	28.300
17	Over- and under pressure safeguard	2	5.400	0%	5.400	10.800
18	Sight glasses/viewing windows with projector	2	6.600	0%	6.600	13.200
19	Dry-cooler	2	28.700	0%	28.700	57.400
20	Heat supply station	1	95.700	0%	95.700	95.700
21	Water supply and canalization system	1	61.300	0%	61.300	61.300
22	Sensors (set)	1	82.500	0%	82.500	82.500
23	Automation and electric cabinet	1	270.000	0%	270.000	270.000
24	Iron chloride reagent tank 9m3 system, as a unit.	1	33.400	0%	33.400	33.400
25	Anti-foam reagent tank 40m3 system, as a unit.	1	115.500	0%	115.500	115.500
			TOTAL, EUR			5.859.100



Payments for equipment and Zorg' services

	Payments in %	
Payments for documentation A		
Advance for documentation	50%	45000
after 2 months	50%	45000
Payments for supervision B		
Advance for supervision	50%	25000
after 3 months	25%	12500
after 6 months	25%	12500
Payments for startup and training C		
Advance for startup and training	50%	25000
after 1,5 months	50%	25000
Payments for living and travel D		
Advance	25%	10000
after 3 months	25%	10000
after 6 months	25%	10000
after 7,5 months	25%	10000
Payments for critical equipment pos 01-09		
Advance against of the corporate guarantee	35%	1396185
after 2 months	10%	398910
after 3 months	20%	797820
after 4 months	30%	1196730
in 15 days after reaching 100% capacity and demonstrating 91% capacity during 4 months	5%	199455
		Deliveries 3.989.100

ZORG
BIOGAS

Business center "Twin Yards"
Walter-Gropius-Straße 23,
DE-80807, München, Germany

Mob. +49 1511 457 29 45 (WhatsApp, Viber, Telegram)

igor.reddikh@zorg-biogas.com
www.zorg-biogas.com

WWW.ZORG-BIOGAS.COM